

Integration with Informatica PowerCenter

YourDataConnect has developed a solution to ingest metadata from Informatica PowerCenter.

Informatica PowerCenter

Informatica PowerCenter is an enterprise extract, transform, and load (ETL) tool used in building enterprise data warehouses. With its high-availability as well as being fully scalable and high-performing, PowerCenter provides the foundation for major data integration projects and initiatives throughout the enterprise. Figure 1 shows the folder, workflow, mapping, transformation, table, and column in PowerCenter.

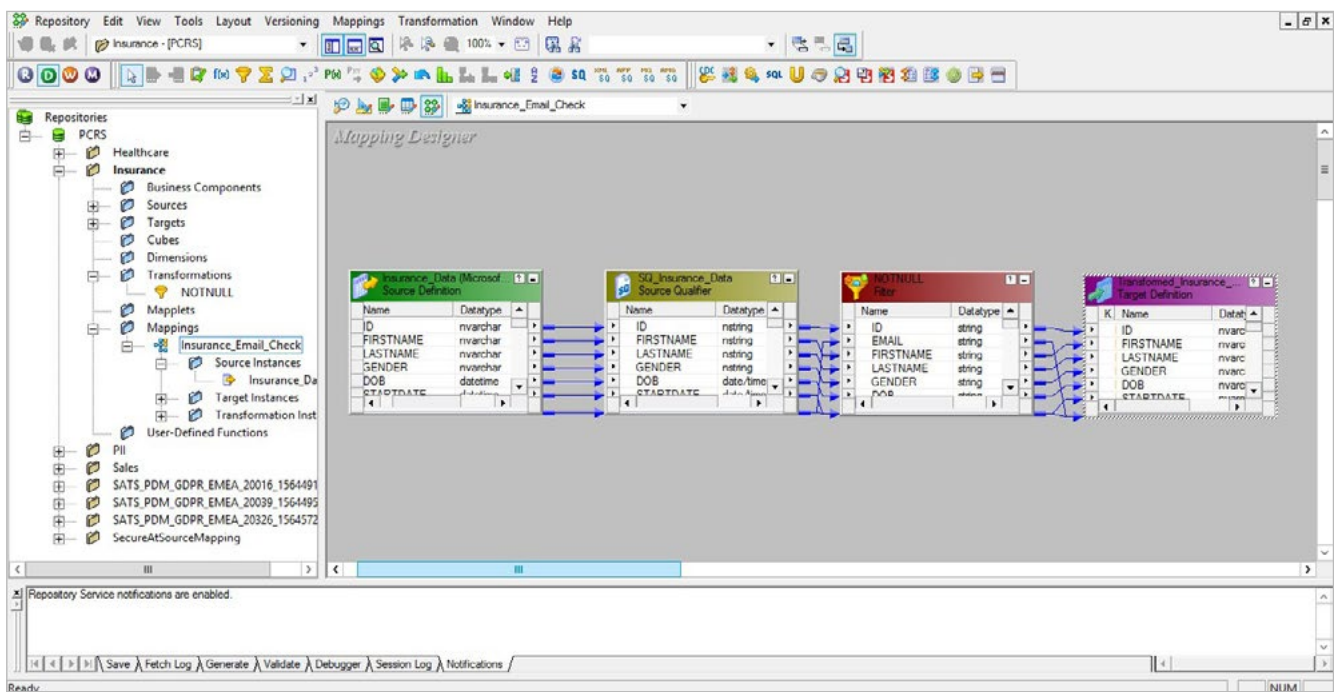


Figure 1: Folder, workflow, mapping, transformation, table, and column in PowerCenter.

Integration of Informatica PowerCenter with YourDataConnect

YourDataConnect has developed a solution to import folder, workflow, session, transformation, mapping, source and target table metadata from Informatica PowerCenter (see Figure 2).

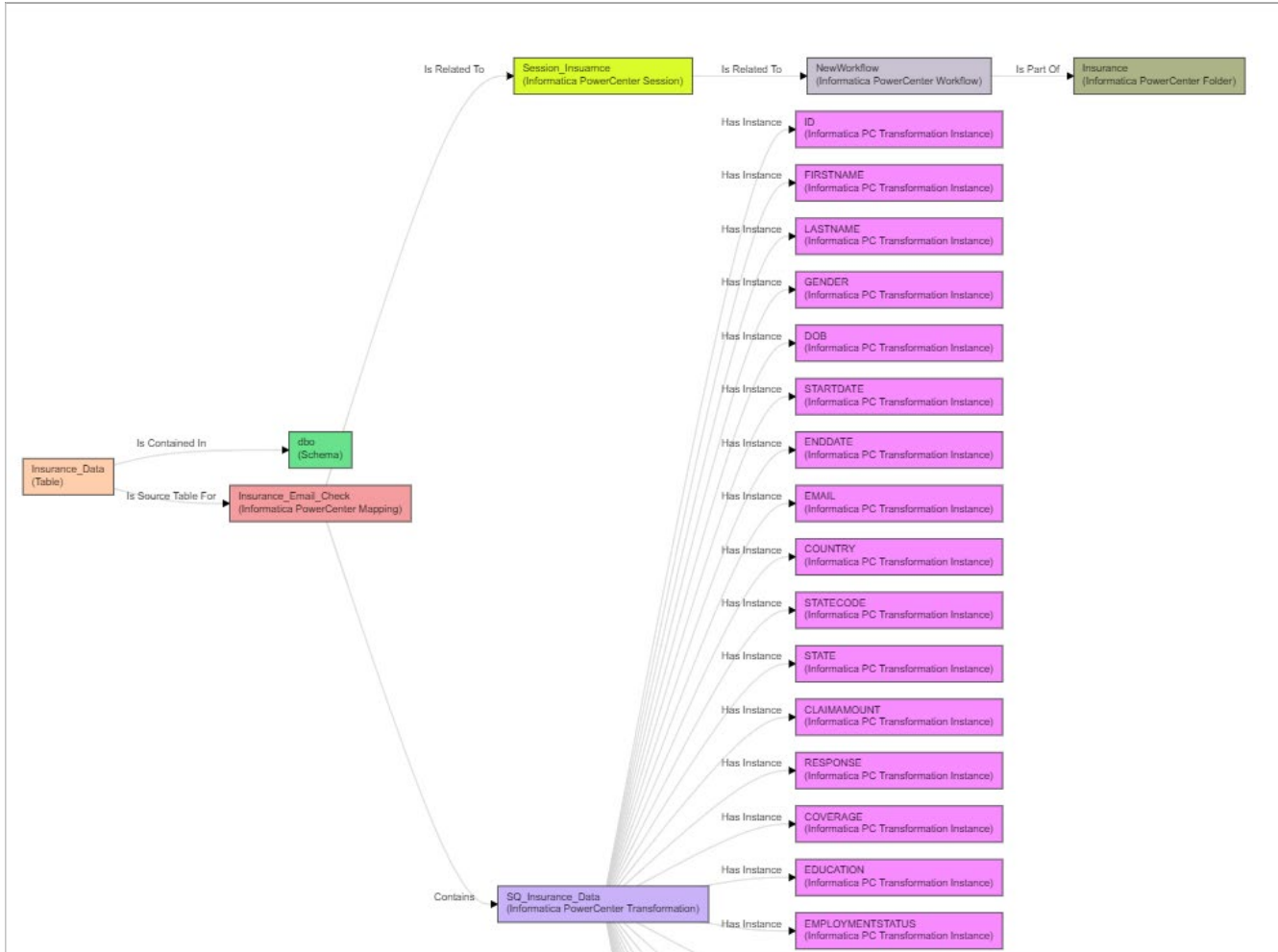


Figure 2: End-to-end traceability of Informatica PowerCenter in YourDataConnect



To learn more about this solution, please request a demo by contacting info@yourdataconnect.com or visit our website at yourdataconnect.com.